

CUTTERBAR

HL 152, 182, 212 & 242



PARTS

UK

1st edition 2019

 **GREENTEC**

Cutting Edge Technology

IMPORTANT INFORMATION**GreenTec HL 152-182-
212-242****PARTS****1. Edition – Marts 2019**

NOTICE: Please ensure that this manual is handed to the operator before using the machine for the first time. If the machine is resold, the Parts list must be given to the new owner!

The information contained in this Parts list is correct at the time of publication. However, in the course of constant development, changes in specification are inevitable. Should you find the information given in this book different to the machine it relates to please contact the “After Sales Department” for advice.



Merkurvej 25
DK 6000 Kolding
Denmark
Tel: +45 75553644
E-mail: info@greentec.eu
Web: www.greentec.eu

CONTENTS

INTRODUCTION	4
USEFUL INFORMATION	5
ORDERING PARTS	6
SPARE PARTS	7
Main frame HL 152	7
Main frame HL 152 list	8
Main frame HL 182	9
Main frame HL 182 list	10
Main frame HL 212	11
Main frame HL 212 list	12
Main frame HL 242	13
Main frame HL 242 list	14
Stickers HL 152-182-212-242	15

INTRODUCTION

Dear customer!

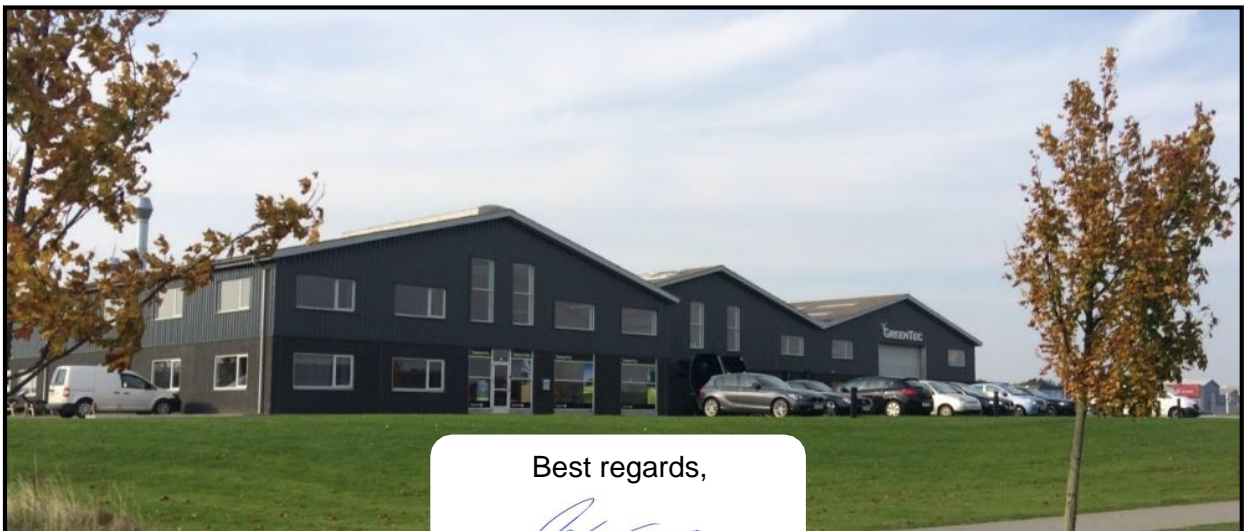
Your new GreenTec machine is constructed with background in more than 20 years' experience with tractor-mounted machines to maintenance of green areas. This machine is produced by the latest technology and recognized safety regulations, standards and regulations.

We want to make a product available in such a way, that neither the use of the machine during transportation or maintenance of the machine causes any damage or misunderstandings.

This parts list contains information that are important and useful for maintaining your GreenTec machine's reliability, dependability and value.

You are welcome to visit our website www.greentec.eu - where the login via the dealer's access gives you the latest updates on instructional and part books on our entire product range.

We hope you will be pleased with your new GreenTec machine.



Best regards,

A handwritten signature in blue ink, appearing to read "John Christensen".

John Christensen
Sales Director GreenTec A/S

GreenTec's vision is to develop and sell quality machines for the maintenance of green areas, including in agriculture, in industry, at airports and in the local sector. Through innovative product development, we will strive to become a leader in our field.

All machines are developed in a simple and functional design in close cooperation with dealers and end users. It is our goal to cover every need in the market segment with preferably two different solutions. In-depth analysis of requirements and serious advice to the customer is offered the best solution, where individual needs can be met through the modularity of the product program.

Our goal is also to offer the best possible after sales service, and a quick and efficient spare parts supply.

USEFUL INFORMATION

Before using the machine for the first time, it's the seller's responsibility that the buyer is given this parts list. If the machine is resold, the parts list must be transferred to the new owner.

Please fill out the list below to ensure that the necessary information is at hand when ordering spare parts etc.

Serial No

Delivery date

Dealer

Tel. / E-mail



Merkurvej 25
DK 6000 Kolding
Denmark
Tel: +45 75553644
E-mail: info@greentec.eu
www: www.greentec.eu
Opening hours: Mon-Fri 8-16

ORDERING PARTS

When ordering parts please refer to your parts list to help your dealer with your order.

- *Part number and quantity*
- *Description*
- *Machine model number*
- *Serial number of the machine*
- *Delivery instructions (e.g. next day).*

Delivery is normally via carrier direct to your dealer. Please check with your dealer for stock availability and arrangement of dispatch. Ensure you or your dealer has sufficient cover for parts requirement outside factory hours.

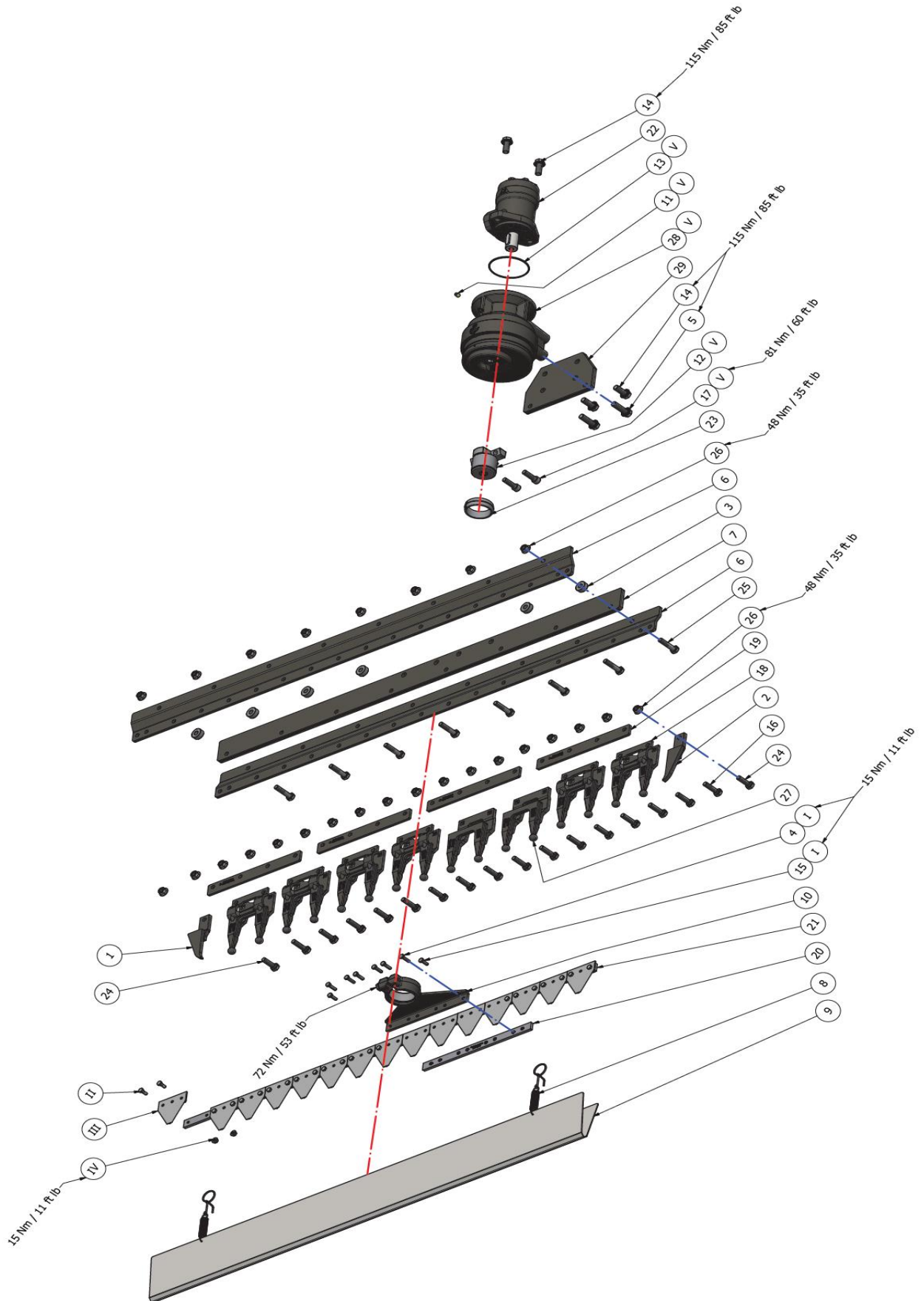
Important Note:

The information contained in this manual is correct at the time of publication. However, in the course of constant development, changes in specification are inevitable. Should you find the information given in this book different to the machine it relates to, please contact the "After Sales Department" for advice.

Key:

LH: Left hand
RH: Right hand

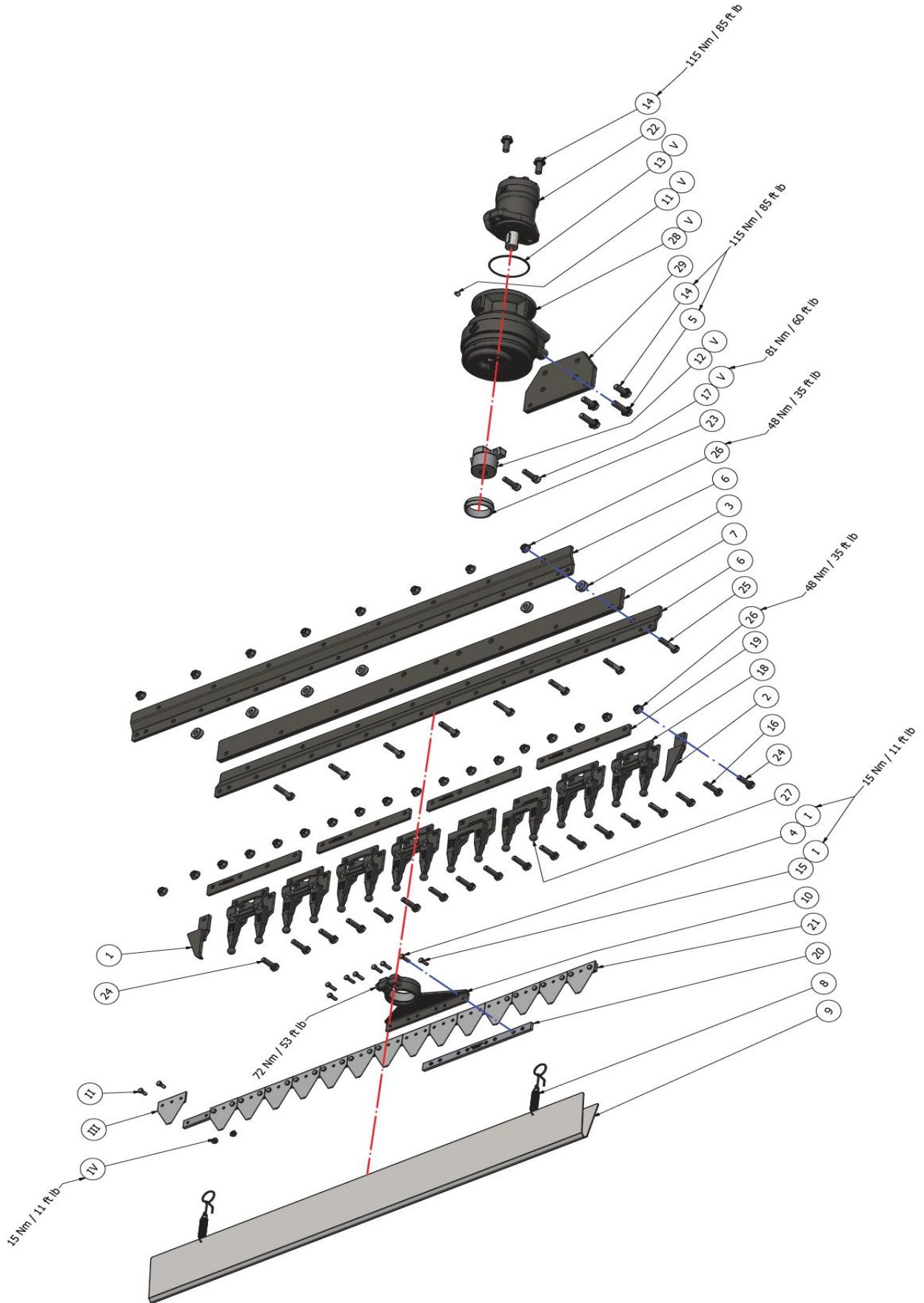
SPARE PARTS
Main frame HL 152



Main frame HL 152 list

Item nbr	Parts nbr	Description	Qty
1	01048.01	Protection guard right	1
2	01049.01	Protection guard left	1
3	01064	Spacer tube	8
4	01086.01	Hexagon bolt	6
5	01087	Safety screw Verbus Ripp	2
6	01828	Profile bar	2
7	01834	Reinforce strip	1
8	01923	Knife Protection clip	2
9	01930	Knife protection	1
10	02290.01	Knifehead pro-drive	1
11	02489	Lubrication nipple cap	1
12	02603.09	Head bearing	1
13	03344	O-ring	1
14	03370	Safety Screw verbus Ripp	4
15	10067.02	Hexagon bolt	2
16	2770396	Hexagon head screw	20
17	10099	Socket head screw	2
18	10631	Guard 17mm with keep-off balls	8
19	10742.02	Spacebar 4-holes	5
20	10926	Knife connector 8 holes	1
21	11833	Mowing knife KM	1
22	12444	Hydraulic motor 100ccm	1
22	12443	Hydraulic motor 80cccm	1
22	12442	Hydraulic motor 50ccm	1
23	12543	Adapter POM	1
24	13014	Hexagon bolt	2
25	8142001	Hexagon head screw	10
26	9113005	Nut	32
27	14502	First double guard 17mm	2
28	A00UQ.01	Pro-drive 85Hs G	1
29	A00UT	Mounting plate	1
I	03291	Screw set	1
II	10931	Teeth bolt	38
III	10991	Knife section pro-cut 3 holes	19
IV	13961	Flange nut	38
V	A00UR	Pro-drive 85MH GK KM	1

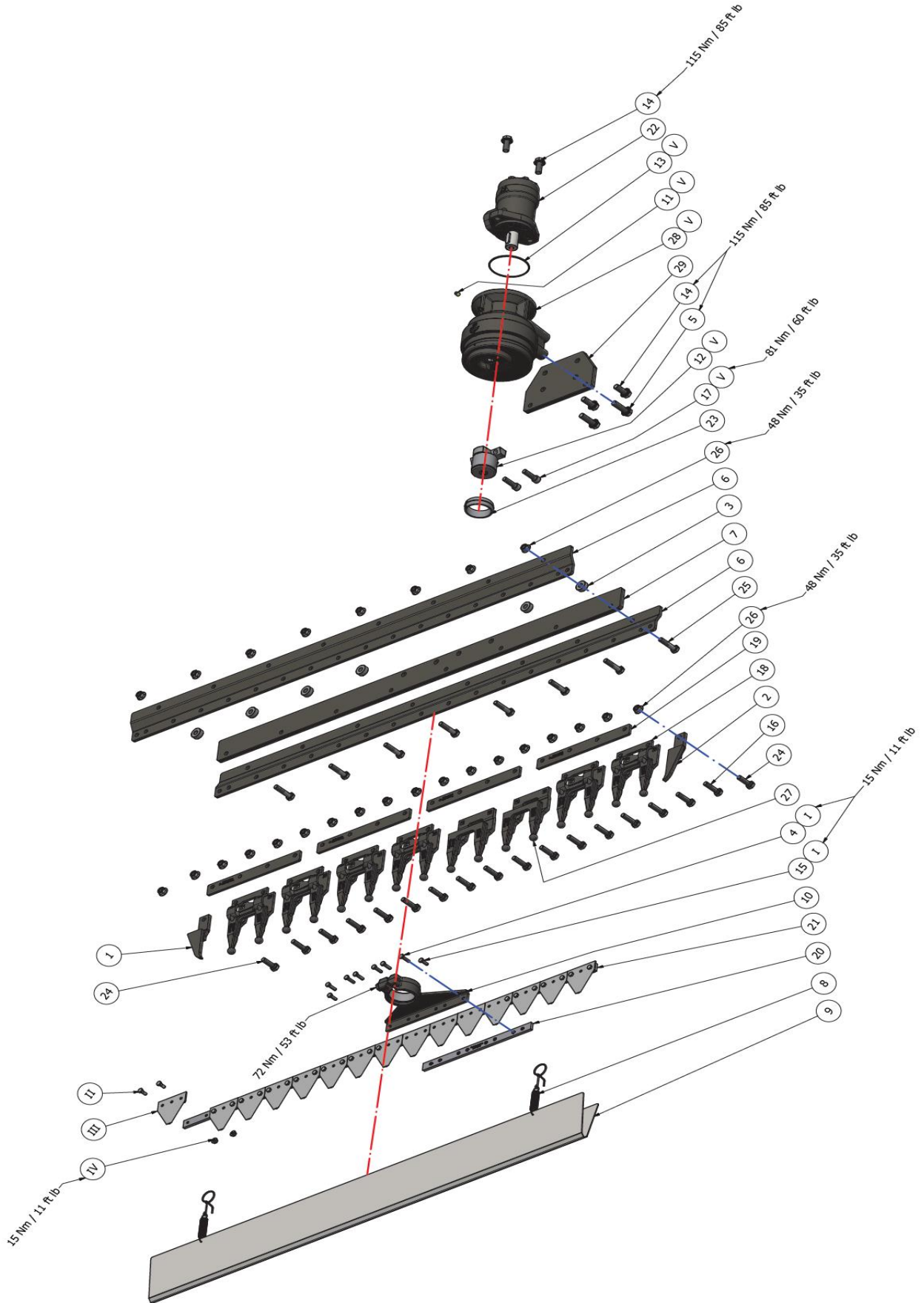
Main frame HL 182



Main frame HL 182 list

Item nbr	Parts nbr	Description	Qty
1	01048.01	Protection guard right	1
2	01049.01	Protection guard left	1
3	01064	Spacer tube	10
4	01086.01	Hexagon bolt	6
5	01087	Safety screw Verbus Ripp	2
6	01829	Profile bar	2
7	01835	Reinforce strip	1
8	01923	Knife Protection clip	2
9	01931	Knife protection	1
10	02290.01	Knifehead pro-drive	1
11	02489	Lubrication nipple cap	1
12	02603.09	Head bearing	1
13	03344	O-ring	1
14	03370	Safety Screw verbus Ripp	4
15	10067.02	Hexagon bolt	2
16	2770396	Hexagon head screw	24
17	10099	Socket head screw	2
18	10631	Guard 17mm with keep-off balls	10
19	10742.02	Spacebar 4-holes	6
20	10926	Knife connector 8 holes	1
21	11834	Mowing knife KM	1
22	12444	Hydraulic motor 100ccm	1
22	12443	Hydraulic motor 80ccm	1
22	12442	Hydraulic motor 50ccm	1
23	12543	Adapter POM	1
24	13014	Hexagon bolt	2
25	8142001	Hexagon head screw	12
26	9113005	Nut	38
27	14502	First double guard 17mm	2
28	A00UQ.01	Pro-drive 85Hs G	1
29	A00UT	Mounting plate	1
I	03291	Screw set	1
II	10931	Teeth bolt	46
III	10991	Knife section pro-cut 3 holes	23
IV	13961	Flange nut	46
V	A00UR	Pro-drive 85MH GK KM	1

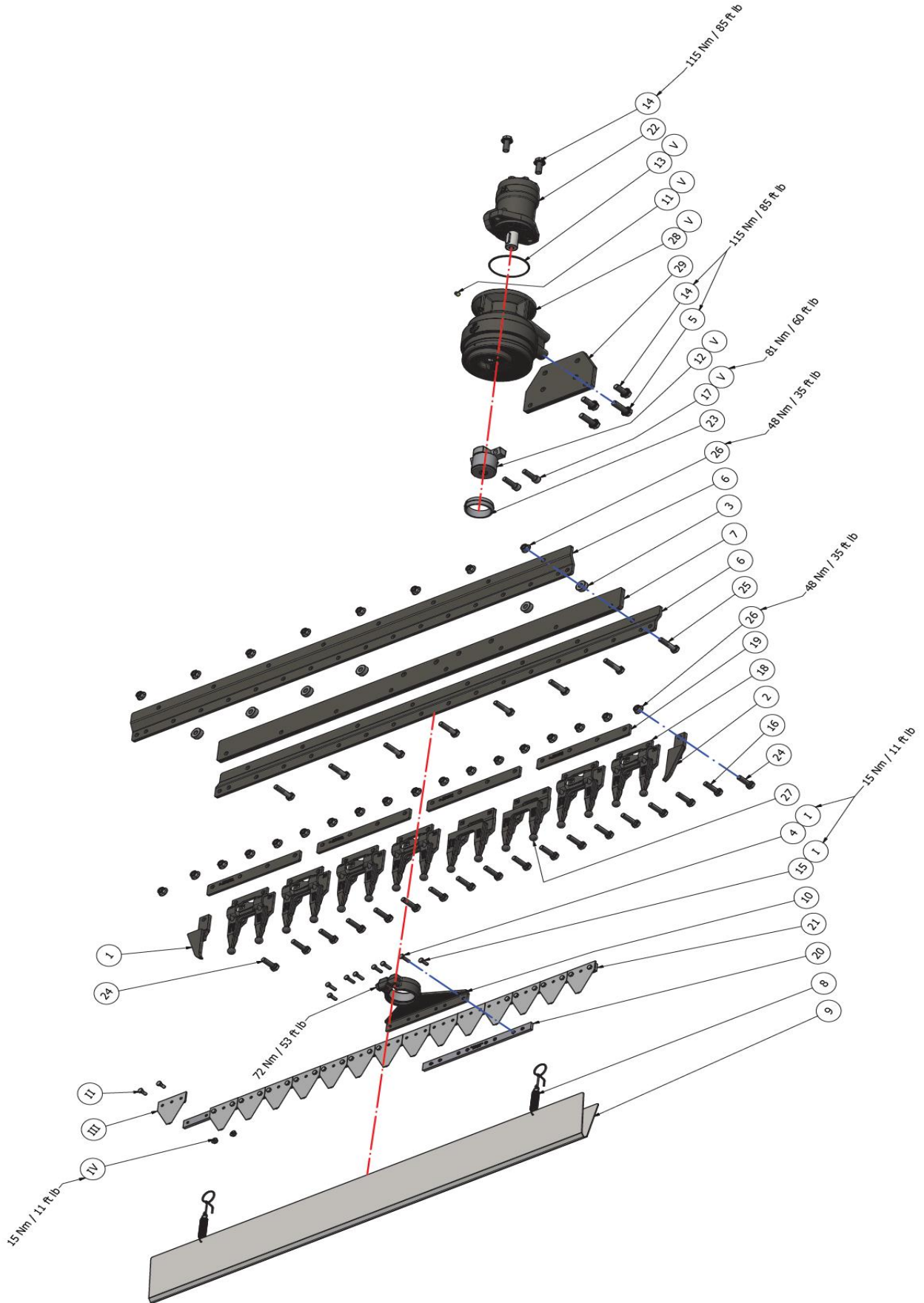
Main frame HL 212



Main frame HL 212 list

Item nbr	Parts nbr	Description	Qty
1	01048.01	Protection guard right	1
2	01049.01	Protection guard left	1
3	01064	Spacer tube	12
4	01086.01	Hexagon bolt	6
5	01087	Safety screw Verbus Ripp	2
6	01830	Profile bar	2
7	01836	Reinforce strip	1
8	01923	Knife Protection clip	2
9	01932	Knife protection	1
10	02290.01	Knifehead pro-drive	1
11	02489	Lubrication nipple cap	1
12	02603.09	Head bearing	1
13	03344	O-ring	1
14	03370	Safety Screw verbus Ripp	4
15	10067.02	Hexagon bolt	2
16	2770396	Hexagon head screw	28
17	10099	Socket head screw	2
18	10631	Guard 17mm with keep-off balls	12
19	10742.02	Spacebar 4-holes	7
20	10926	Knife connector 8 holes	1
21	1183	Mowing knife KM	1
22	12444	Hydraulic motor 100ccm	1
22	12443	Hydraulic motor 80ccm	1
22	12442	Hydraulic motor 50ccm	1
23	12543	Adapter POM	1
24	13014	Hexagon bolt	2
25	8142001	Hexagon head screw	14
26	9113005	Nut	44
27	14502	First double guard 17mm	2
28	A00UQ.01	Pro-drive 85Hs G	1
29	A00UT	Mounting plate	1
I	03291	Screw set	1
II	10931	Teeth bolt	54
III	10991	Knife section pro-cut 3 holes	27
IV	13961	Flange nut	54
V	A00UR	Pro-drive 85MH GK KM	1

Main frame HL 242



Main frame HL 242 list

Item nbr	Parts nbr	Description	Qty
1	01048.01	Protection guard right	1
2	01049.01	Protection guard left	1
3	01064	Spacer tube	14
4	01086.01	Hexagon bolt	6
5	01087	Safety screw Verbus Ripp	2
6	02451	Profile bar	2
7	02449	Reinforce strip	1
8	01923	Knife Protection clip	2
9	02569	Knife protection	1
10	02290.01	Knifehead pro-drive	1
11	02489	Lubrication nipple cap	1
12	02603.09	Head bearing	1
13	03344	O-ring	1
14	03370	Safety Screw verbus Ripp	4
15	10067.02	Hexagon bolt	2
16	2770396	Hexagon head screw	32
17	10099	Socket head screw	2
18	10631	Guard 17mm with keep-off balls	14
19	10742.02	Spacebar 4-holes	8
20	10926	Knife connector 8 holes	1
21	17607	Mowing knife KM	1
22	12444	Hydraulic motor 100ccm	1
22	12443	Hydraulic motor 80ccm	1
22	12442	Hydraulic motor 50ccm	1
23	12543	Adapter POM	1
24	13014	Hexagon bolt	2
25	8142001	Hexagon head screw	16
26	9113005	Nut	50
27	14502	First double guard 17mm	2
28	A00UQ.01	Pro-drive 85Hs G	1
29	A00UT	Mounting plate	1
I	03291	Screw set	1
II	10931	Teeth bolt	62
III	10991	Knife section pro-cut 3 holes	31
IV	13961	Flange nut	62
V	A00UR	Pro-drive 85MH GK KM	1

Stickers HL 152-182-212-242

HL 152



HL 152 advarselsmærker – 273 x 80 mm



HL 152 advarselsmærker – 80 x 80 mm



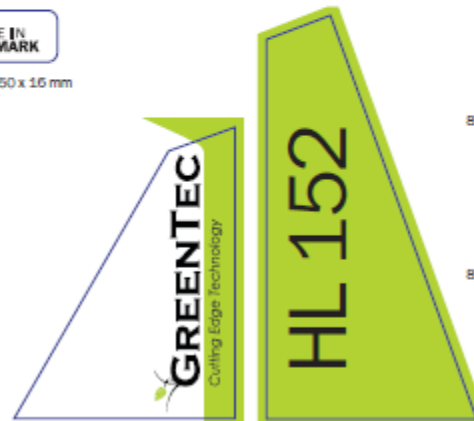
GreenTec_Påbudsmærker – 130 x 25 mm



Made in denmark – 50 x 16 mm



HL 152 Logo + model – 125 x 165 mm



HL 152 Logo + model – 125 x 240 mm



8770322 Smørring – 50 x 24 mm



8770322 Smørring – 50 x 24 mm

HL 152 KITS

HL 182



HL 182 advarselsmærker – 273 x 80 mm



HL 182 advarselsmærker – 80 x 80 mm



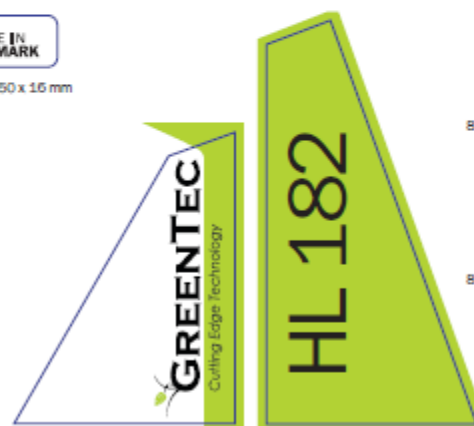
GreenTec_Påbudsmærker – 130 x 25 mm



Made in denmark – 50 x 16 mm



HL 182 Logo + model – 125 x 165 mm



HL 182 Logo + model – 125 x 240 mm



8770322 Smørring – 50 x 24 mm



8770322 Smørring – 50 x 24 mm

HL 182 KITS

HL 212



HL 212 advarselsmærker – 273 x 80 mm



HL 212 advarselsmærker – 80 x 80 mm



GreenTec_Påbudsmærker – 130 x 25 mm



Made in denmark – 50 x 16 mm



HL 212 Logo + model – 125 x 165 mm



HL 212 Logo + model – 125 x 240 mm



8770322 Smørring – 50 x 24 mm



8770322 Smørring – 50 x 24 mm

HL 212 KITS

HL 242



HL 242 advarselsmærker – 273 x 80 mm



HL 242 advarselsmærker – 80 x 80 mm



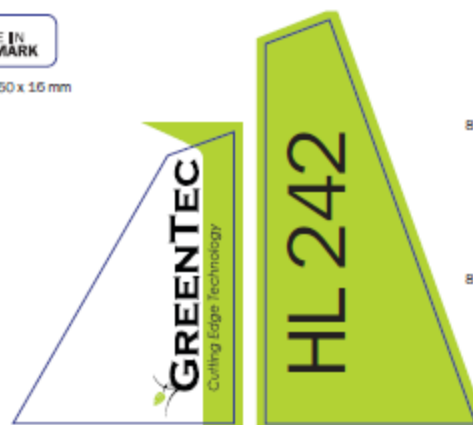
GreenTec_Påbudsmærker – 130 x 25 mm



Made in denmark – 50 x 16 mm



HL 242 Logo + model – 125 x 165 mm



HL 242 Logo + model – 125 x 240 mm



8770322 Smørring – 50 x 24 mm



8770322 Smørring – 50 x 24 mm

HL 242 KITS

Part number	Description	QTY
HL152KITS	Stickers kit cpl.	1
HL182KITS	Stickers kit cpl.	1
HL212KITS	Stickers kit cpl.	1
HL242KITS	Stickers kit cpl.	1



Merkurvej 25 | DK-6000 Kolding | Tel.: +45 75 55 36 44 | info@GreenTec.eu | www.GreenTec.eu

Cutting Edge Technology