

QUADSAW

LRS 1402



PARTS

UK

9th Edition 2021

 **GREENTEC**

Cutting Edge Technology

GreenTec LRS 1402

PARTS 9th Edition – April 2021

Please ensure that this manual is handed to the operator before using the machine for the first time. If the machine is resold the Parts list must be given to the new owner!

The information contained in this Parts list is correct at the time of publication. However, in the course of constant development, changes in specification are inevitable. Should you find the information given in this book different to the machine it relates to please contact the “After Sales Department” for advice



Merkurvej 25
DK 6000 Kolding
Danmark
Tel: +45 75553644
Email: info@greentec.eu
web: www.greentec.eu

Contents

Contents	4
Introduction	5
Useful information	6
Ordering parts	7
Spare parts	8
Main Frame	8
Transmission „Blade“	10
Transmission Motor	12
Belt Tensioner	14
Stickers	15

Introduction

Dear customer!

Your new GreenTec machine is constructed with background in more than 20 years experience with tractor mounted machines to maintenance of green areas. This machine is produced by the latest technology and recognized safety regulations, standards and regulations.

We want to make a product available in such a way, that neither the use of the machine during transportation or maintenance of the machine causes any damage or misunderstandings.

This parts list contains information that are important and useful for maintaining your GreenTec machine's reliability, dependability and value.

You are welcome to visit our website www.greentec.eu - where the login via the dealer's access gives you the latest updates on instructional and part books on our entire product range. The password for dealer log-in: PUBLISHER

We hope, you will be pleased with your new GreenTec machine.

Best regards,



John Christensen
Sales Director GreenTec A/S



GreenTec's vision is to develop and sell quality machines for the maintenance of green areas, including in agriculture, in industry, at airports and in the local sector. Through innovative product development, we will strive to become a leader in our field.

All machines are developed in a simple and functional design in close cooperation with dealers and end users. It is our goal to cover every need in the market segment with preferably 2 different solutions. In-depth analysis of requirements and serious advice to the customer is offered the best solution, where individual needs can be met through the modularity of the product program.

Our goal is also to offer the best possible after sales service, and a quick and efficient spare parts supply.

Useful information

Before using the machine for the first time, it's the seller's responsibility that the buyer is given this parts list. If the machine is resold, the parts list must be transferred to the new owner.

Please fill out the list below to ensure that the necessary information is at hand when ordering spare parts etc.

Serial No

Delivery date

Dealer

Tel./ E-mail



Merkurvej 25
DK 6000 Kolding
Denmark
Tel: +45 75553644
Email: info@greentec.eu
web: www.greentec.eu
Opening hours: Mon-Fri 8-16

Ordering parts

When ordering parts please refer to your parts list to help your dealer with your order.

Part number and quantity
Description
Machine model number
Serial number of the machine
Delivery instructions (e.g. next day).

Delivery is normally via carrier direct to your dealer. Please check with your dealer for stock availability and arrangement of dispatch. Ensure you or your dealer has sufficient cover for parts requirement outside factory hours.

Important Note

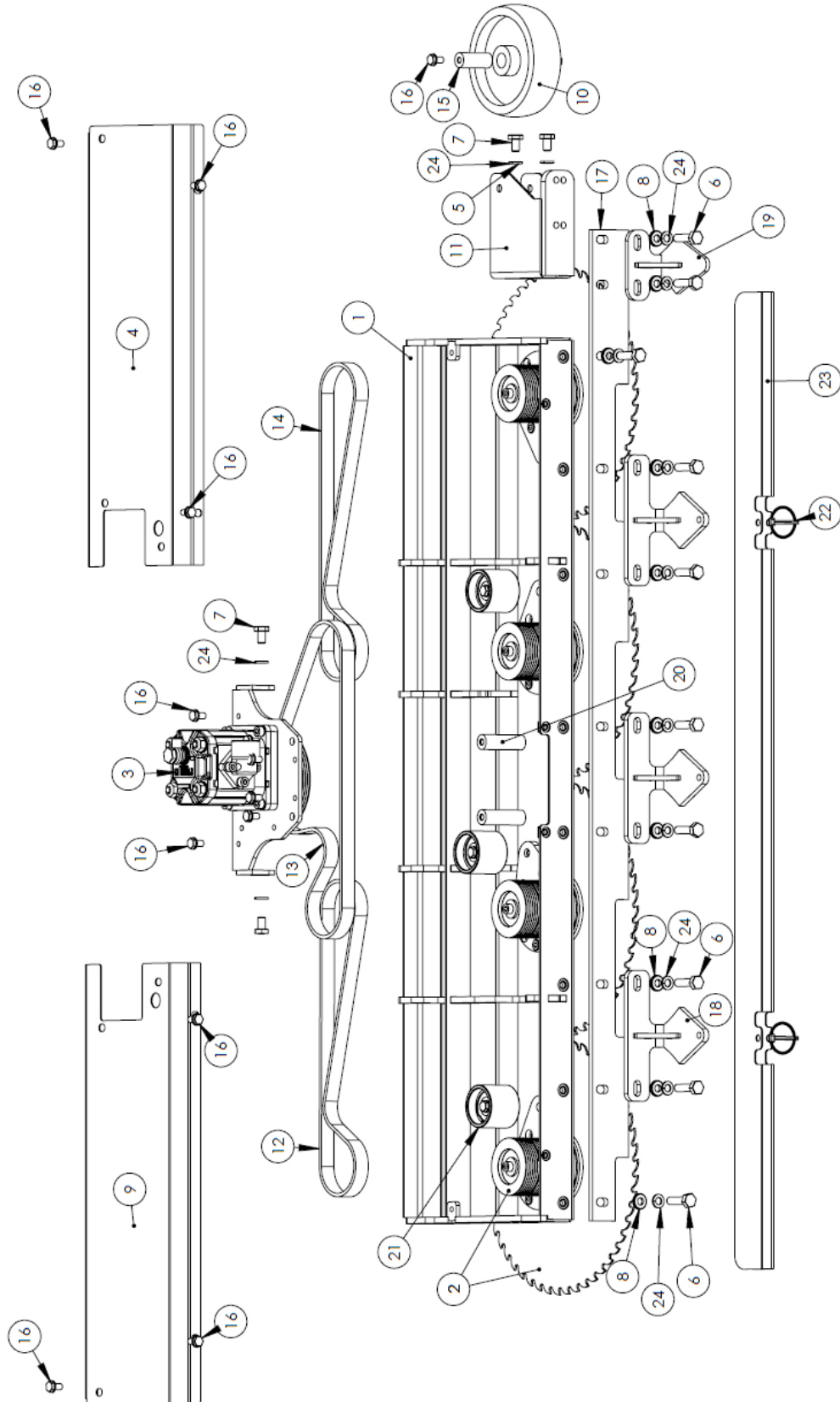
The information contained in this manual is correct at the time of publication. However, in the course of constant development, changes in specification are inevitable. Should you find the information given in this book different to the machine it relates to, please contact the "After Sales Department" for advise.

Key:

(LH)	=	Left hand
(RH)	=	Right hand

Spare parts

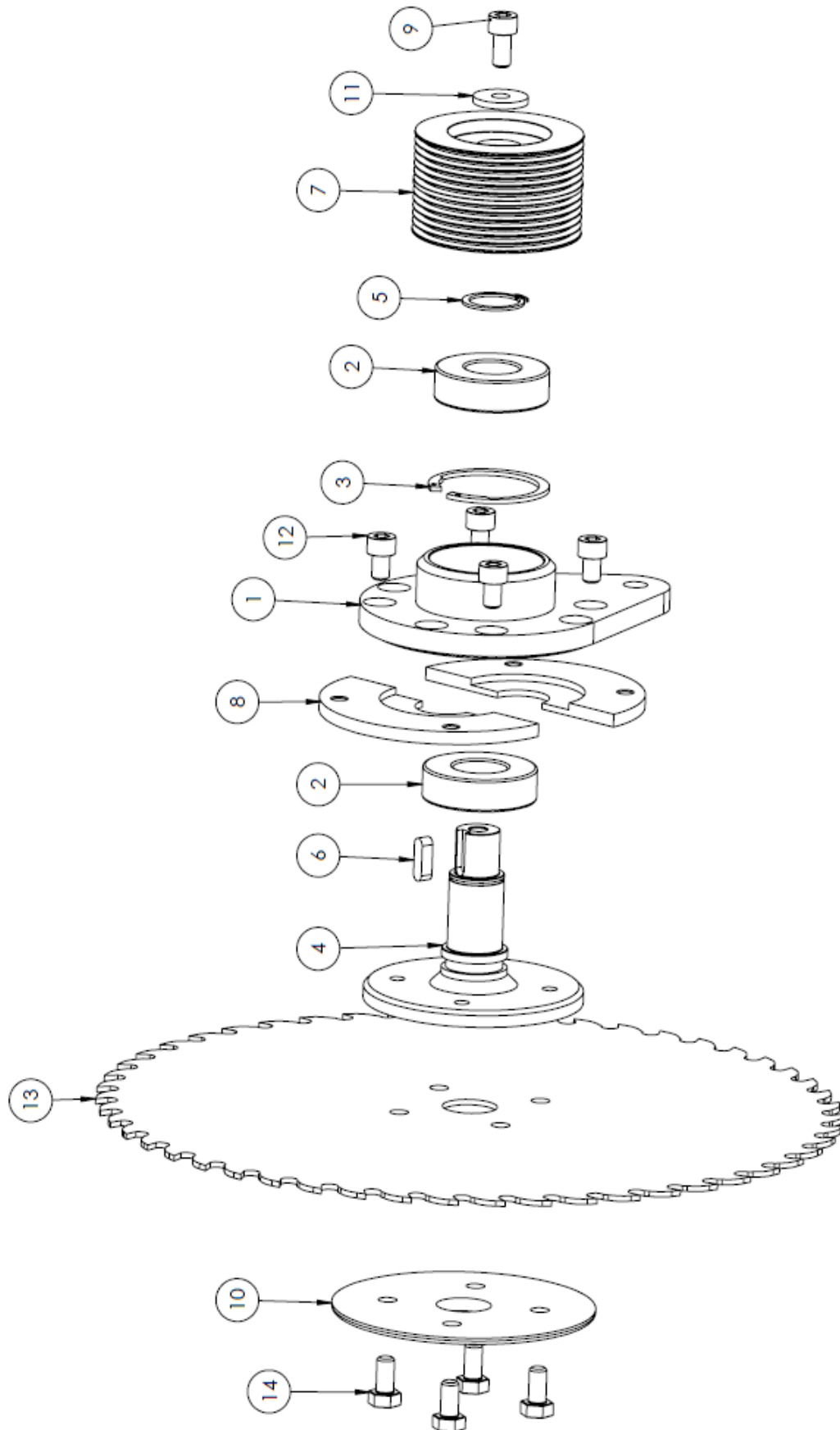
Main Frame



Main Frame

Item	Qty.	Part no.	Description
1	1	8141501	Body
2	4		See Headline "Transmission Sawblade"
3	1		See Headline "Transmission Motor POST Dec. 2014"
4	1	8141019	Lid (Painted Black)
5	2	8222024	Washer M10
6	10	2770396	Bolt M10x35
7	4	8142002	Bolt M10x16
8	10	8142003	Washer HD M10
9	1	8141020	Lid (Painted Black)
10	1	8146001	Wheel
11	1	8141502	Wheel bracket
12	1	8144001	Belt for blade
13	1	8144002	Belt for motor
14	1	8144001	Belt for blade
15	1	8141003	Shaft
16	16	8142011	Bolt
17	1	8148001	Plastic rail
18	3	8141503	Branch deflector
19	1	8141504	Branch deflector (Lower)
20	2	N/A	Use 8141026
21	3		See Headline "Belt tensioner"
22	2	8146002	Lynch pin
23	2	8141004	Protective guard for blades
24	12	8222003	Skive

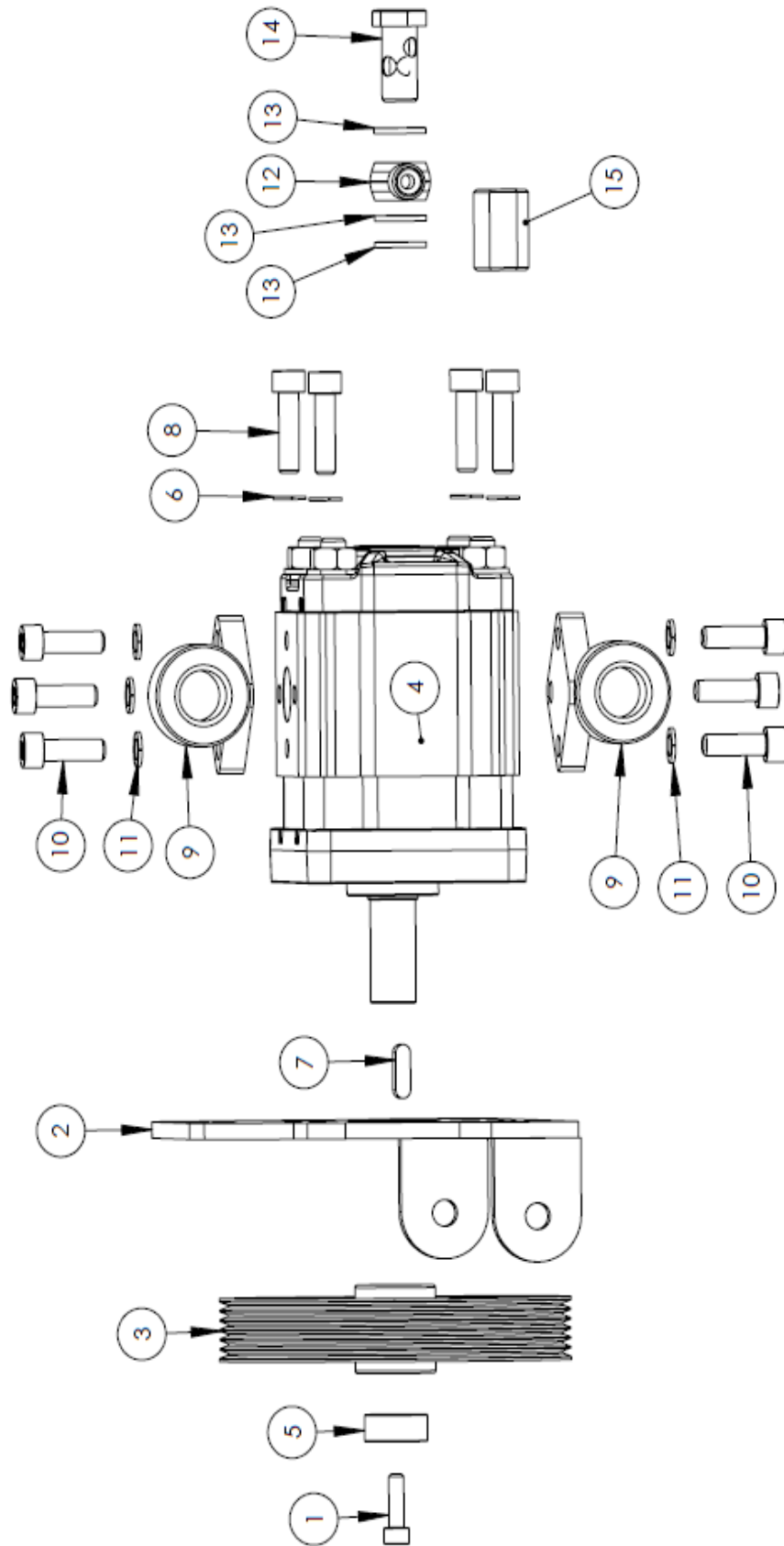
Transmission „Blade“






















Transmission „Blade“

Item	Qty.	Part no.	Description
1	1	8141005	Bearing house
2	2	8144003	Bearing
3	1	8142005	Lock ring
4	1	8141006	Shaft
5	1	2771111	Lock ring
6	1	8144004	Key
7	1	8144005	Pulley
8	2	8141007	Half moon
9	1	8142008	Bolt
10	1	8141009	Mounting plate (outer) for Bolts.
11	1	200138	Washer HD M8
12	4	8142004	Bolt
13	1	140111.0	Blade 340 mm
Not shown	1	8148002	Belt test tool "Optikrik I" NOT SHOWN
14	4	8142008	Bolt

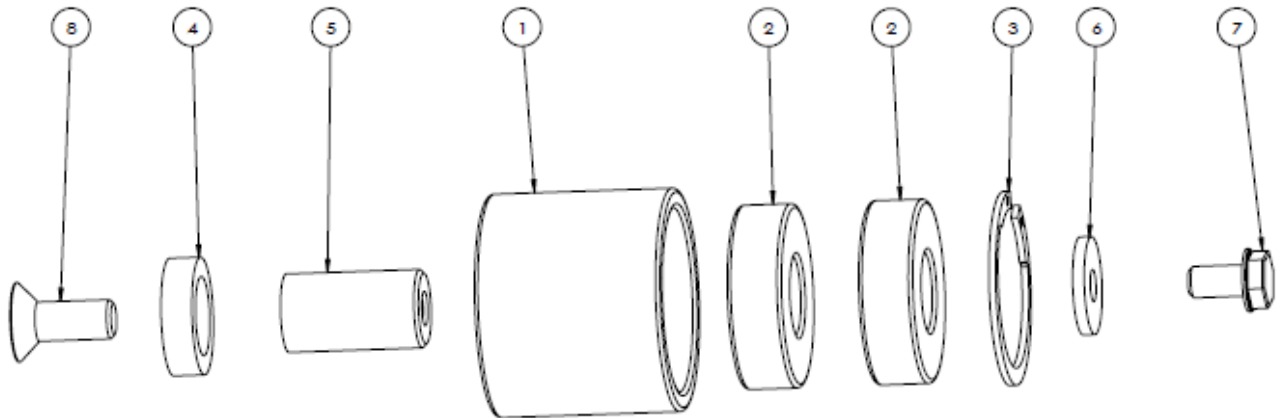
Transmission Motor



Item	Qty.	Part no.	Description
1	1	8142009	Allen screw M6x12
2	1	8141014	Mounting plate
3	1	8144009	Pulley when use pos. 4a 
3a	1	8144009.1	Pulley when use pos. 4b and 4c 
4a	1	8143001	Motor 11,2 cc/rev  (logo on motor) Old
*4b	1	8143008	Motor 11,2cc/rev  (logo on motor) New, alu flange
**4c	1	6701975	Motor 11,2cc/rev  (logo on motor) New, cast iron flange
Not shown	1	8143006	Sealkit for Motor 
Not shown	1	6701938	Sealkit for Motor 
5	1	8141015	Bushing
6	4	8222038	Washer
7	1	8144004	Key
8	4	8142012	Bolt
**8c	4	8482012	Bolt
9a	2	8143002	Flange incl.bolt,seal,washer  (logo on motor)
*9b	2	8483002	Flange incl.bolt,seal,washer  (logo on motor)
10+11a	6		Use 8143002  (logo on motor)
*10+11b	8		Use 8483002  (logo on motor)
12a	1	8143004	Banjo  (logo on motor)
*12b	1	8173001	Banjo  (logo on motor)
13a	3	8143005	Sealwasher  (logo on motor)
*13b	3	8173003	Sealwasher  (logo on motor)
Not shown	1	8148002	Belt test tool "Optikrik I" NOT SHOWN
14a	1	8143004	Banjo bolt  (logo on motor)
*14b	1	8173002	Banjo bolt  (logo on motor)
15	1	AI08LR1/4X	Nippel

*When new motor  replaces old motor , remember to buy 9b,10+11b,12b,13b and 14b
 ** Machine from serielnbr. 221814251 new motor. **When this motor is replaces, remember to buy pos **8c+3a+5.**

Belt Tensioner



Item	Qty.	Part no.	Description
1	1	8141011	Tensioner
2	2	8144008	Bearing
3	1	8142010	Lockring
4	1	8141012	Washer
5	1	8141013	Shaft
6	1	8142007	Washer HD M8
7	1	8142011	Bolt
8	1	8142013	US-Bolt

Stickers



LRS1402 Klistermærke - 500 x 72 mm



LRS1402 advarselmærker1 - 173 x 107 mm



LRS1402 advarselmærker2 - 173 x 107 mm



GreenTec_P8000mærker - 130 x 25 mm



Made in denmark - 50 x 16 mm

LRS1402 KITS

Item	Qty.	Part no.	Description
1	1	Lrs1402kits	Sticker kit cpl.



Merkurvej 25 | DK-6000 Kolding | Tel.: +45 75 55 36 44 | info@GreenTec.eu | www.GreenTec.eu

Cutting Edge Technology